



Price 2/- net.

EGYPTIAN
INTERPOSTALS

Or Official Local Stamps

By O. MAY

Materially assisted by H. H. HARLAND,
P. J. EVANS and others

*Reprinted from "THE POSTAGE STAMP,"
and published in book form for THE
FISCAL PHILATELIC SOCIETY, by
BRIDGER & KAY
71 Fleet Street, London, E.C.*

EGYPTIAN INTERPOSTALS

Or OFFICIAL LOCAL STAMPS

INTRODUCTION.

A BETTER name for these stamps would appear to be "*Egyptian Official Locals*": but in the absence of any sworn testimony as to their place in philately, no doubt the old title will continue to serve. The stamps consist of circular official labels, issued between the years of 1864 and 1890, from many of the towns and villages of Egypt, and also from a few seaports in Turkey, Palestine, Somaliland, Greece and the Ægean Islands. The majority are known with a town and dated postmark, the obliteration being almost invariably that of the town for which the particular emission was prepared. No face value appears on the stamps, so the question as to whether they are really official frank stamps or seals remains a question as before.

LIST OF TYPES.



TYPE I.



TYPE Ia.

Additions or alterations to this list will be published from time to time in the "Bulletin of the Fiscal Philatelic Society."

Type I. (1864-5). Inscribed "Amministrazione della Posta Europea in Egitto—Uffizio di . . .". Latter part of wording horizontally in centre; no Turkish characters on stamp. Frame:—Double outer line only. Black impression on colour. Size $38\frac{1}{2}$ mm. This was the administrative label of the Italian Post Office, and was issued before the introduction of ordinary postage stamps into Egypt. No copies are found postmarked, so this type was probably of the nature of an official seal. About 17 different towns are listed as having used these labels.

Type Ia. Inscribed "Agenzia Diplomatica di S. M. il Re D'Italia. Cairo". Italian arms in centre. Embossed in white on coloured ground: white paper. No Turkish inscription. Frame:—Double outer and single inner embossed lines. Size $34\frac{1}{2}$ mm.



TYPE II.



TYPE III.

Type II (1865-6). Inscribed "Poste Vice Reali Egiziane: —", around outer frame, with three lines of Turkish characters in centre*. Small 8-rayed asterisk at each side between inscription and town name. Frame:—Single outer and inner lines. Black impres-

* In the *Stamp Collectors' Magazine* (1867, Vol. V., page 40) these Turkish characters are translated as follows:—"Bosted Masrieh el Mirich", meaning "Egyptian Government Post".

sion on colour. Size $33\frac{1}{2}$ mm. This type was issued concurrently with the first issue of Egyptian postage stamps, and it is worthy of note that the productions from this and all the subsequent types seem to have been carefully postmarked when used.

Type III. (Jan. 1867). Inscribed as II. Larger size. No ornaments whatever on stamp: name of town in Roman, rest in sans-serif, type. Frame:—Triple outer and single inner lines, coloured impression on white. Size $38\frac{1}{2}$ mm.



TYPE IIIa.



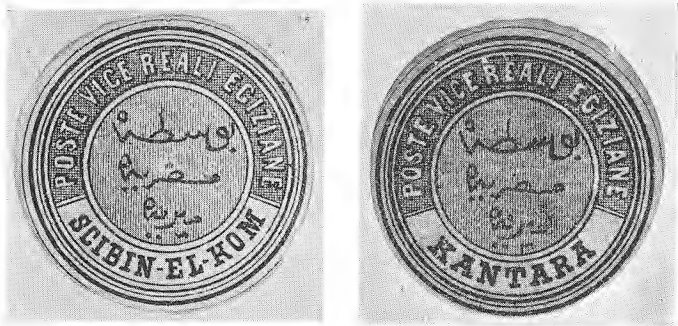
TYPE IIIb.

Type IIIa. Similar to III., but inscribed in centre "Direzione Generale", in place of Turkish inscription.

Type IIIb. As IIIa., but without name of town (Alexandria).

Type IV. (Jan. 1868). Inscribed as II. in white block type on ground of crossed lines: town name in plain space below. Frame:—Quintuple outer and double inner lines. Black impression on colour, or, later, colour on white. Size 39 mm.

†*Die A.* Letter O is nearly rectangular, and G is made clearly, as follows: "G"; also inscription is in rather thin letters, with good spaces between words: e.g., 2 mm. between "VICE" and "REALI" at tops of letters. (1868-71).



TYPE IV. DIE A.

TYPE IV. DIE B.

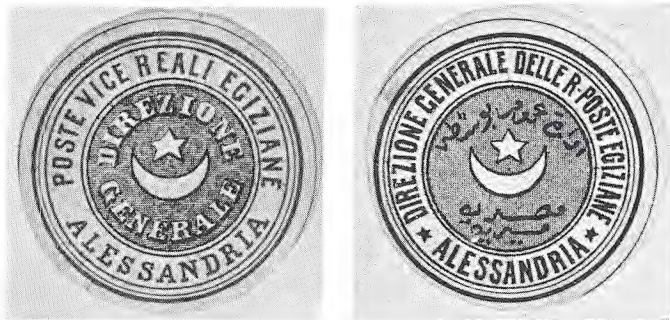
†*Die B.* Letter O is oval, and G poorly shaped, thus: "G"; inscription is in thicker lettering, with less space between words: e.g., $1\frac{1}{2}$ mm. between "VICE" and "REALI". (1869-74).

Type IVa. Inscribed as IV., but crescent and star in centre, surrounded by words "Direzione Generale", and no Turkish inscription. Fancy lined ground to centre, but outer band unshaded. Frame:—Quadruple outer and double inner lines. Bi-coloured impression on white. Size $39\frac{1}{2}$ mm.

Type IVb. Inscribed "Direzione Generale delle R-Poste Egiziane—Alessandria". Crescent and star, surrounded by Turkish inscription, all on ground of vertical lines, in centre. Outer frame quite plain, but star each side between inscription and name of town.

† The term "Die," though not technically correct, is used here and in Type V. for convenience and terseness, and not in any restricted sense.

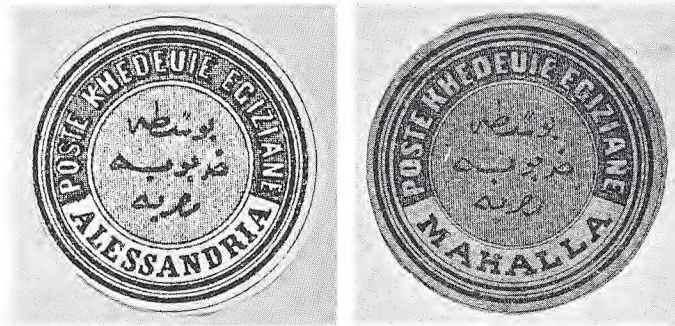
Frame as IVa. Gold impression on white. Size $39\frac{1}{2}$ mm.



TYPE IVa.

TYPE IVb.

Type V. (Jan. 1871). Inscribed "Poste Khedeuie Egiziane." around outer frame, and Turkish inscription in centre altered to correspond: design otherwise similar to IV. Coloured impression on white or colour, and, later, black on colour. Seven Turkish characters in all. Size 39 mm.

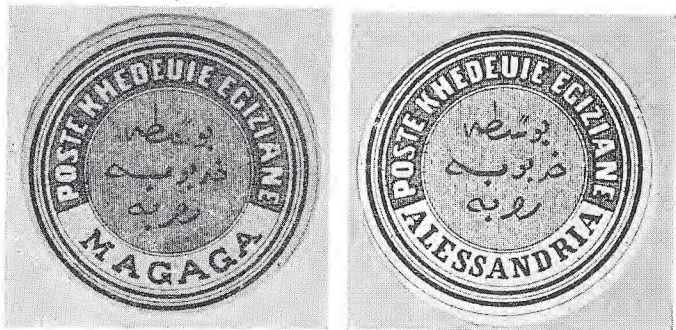


TYPE V. DIE A.

TYPE V. DIE B.

Die A. Inscription in thin letters, and words widely spaced, about $2\frac{1}{2}$ mm. apart. Turkish characters thick and rather blurred. (1871).

Die B. Letters of inscription thick, and words only $1\frac{1}{2}$ mm. apart: Turkish characters thinner and clearer, but similar in shape to Die A. Notably: 6th character has triangular head. (1872-4).



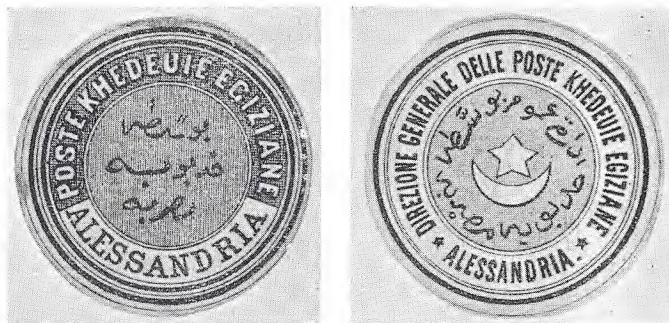
TYPE V. DIE C.

TYPE V. DIE D.

Die C. As Die B, except for Turkish:—2nd character begins 1 mm. below end of 1st; 5th ends in short curl instead of loop; 6th has blunt head; and 7th has more decided "knee." (1874-6).

Die D. Nearly as B and C, except Turkish characters:—Loop to 5th is very long and nearly touches hinder point; 6th has round head; and 7th no "knee." (1874-8).

Die E. Inscription slightly thinner again and wider spaced; general impression, including name of town and Turkish, bolder and clearer. 2nd character begins almost on a level with end of 1st; 5th has medium loop; and 7th has decided knee (outside loop) and thick front end. Printed in scarlet towards end of issue. (1877-80).



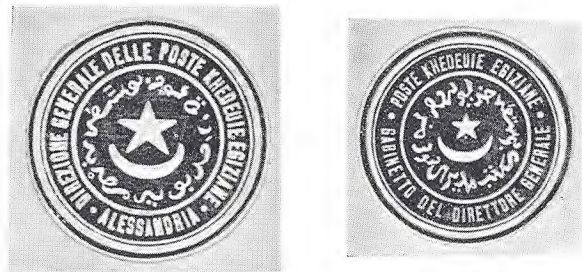
TYPE V. DIE E.

TYPE Va.

Note.—Although I have listed these five varieties:—A, B, C, D, and E in the check list that follows, I have in that list numbered the varieties so that B, C, and D appear as minor varieties of one stamp, thus recognising only *three main varieties* of this particular type, thus:—

- A.
- B, C, D.
- E.

Type Va. Inscribed "Direzione Generale delle Poste Khedeuie Egiziane,—Alessandria". Design similar to IVb., also frame, colour, and size.



TYPE VI.

TYPE VIa.

Type VI. (Oct. 1872). Inscribed as Va., much smaller, and embossed in white on coloured ground. Large star and crescent in centre, surrounded by Turkish inscription. Round stop each side between name of town (Alexandria) and inscription. Frame:—Double outer and single inner embossed line. Colour on white or colour. Size $31\frac{1}{2}$ mm.

Type VIa. Inscribed "Poste Khedeuie Egiziane—Gabinetto del Direttore Generale": stop each side to separate inscriptions. Design as VI., but still smaller. Small star over crescent in centre. Colour on white or colour. Size 28 mm.



TYPE VIb.

Type VIb. Inscribed "Poste Khedeuie Egiziane—Gabinetto del Vice Direttore". Similar to VIa., but lettering taller, six pointed stars instead of stops at sides, and large star over crescent in centre. Colour on white. Size 28 mm.

Type VII. (1877). Inscribed "Postes Egyptiennes" in bold block type on ground of crossed lines: name of town in white space, in lower part of frame as before. Turkish inscription similar to V., Die E, but still bolder. Frame:—Quintuple outer and double inner lines. Scarlet to orange-red impression on white (listed as scarlet in all cases to avoid confusion). Size 39 mm. to $39\frac{1}{2}$ mm. (Although a later type, these appear to have been used contemporarily with the scarlet issues of V. E).



TYPE VII.



TYPE VIIa.

Type VIIa. Similar to VII., but name of town in Turkish, added, after European name, in lower division of frame. Issued for a few towns only.



TYPE VIII.



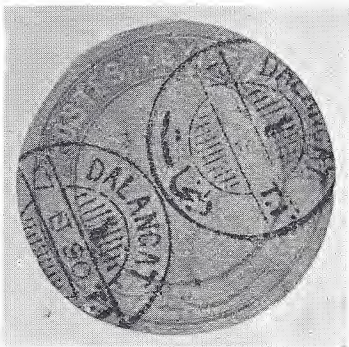
TYPE VIIIa.

Type VIII. (1881). Inscribed as VII., in rather less bold type. Last line of previous Turkish inscription deleted, and replaced by name of town in Turkish; hence this line differs for each town. Name of latter in bold, clear letters at base. Frame as VII. Brown-red to dull vermilion on white (listed as brown-red in all cases). Size $37\frac{1}{2}$ mm. (paper 37- $37\frac{1}{2}$ mm.).

Type VIIa. (1885). Similar to VIII., but name of town in smaller and poorer type. Turkish name also appears less clear. Pale orange-red to bright red on white (listed as pale red in all cases). Size as VIII., but paper cut to barely 37 mm., making stamp appear smaller. The paper itself is thinner than before, and sometimes has a semi-transparent appearance.



TYPE IX.



TYPE X.

Type IX. (1887). Inscribed as VII., etc. Turkish inscription on plain white ground in lower part of frame. Name of town in centre of stamp, with same in Turkish immediately below. Small star and crescent, between Greek scrolls, above name of town. Frame as VII. Light blue to ultramarine on white (listed as blue in all cases). Size 39½ mm. (paper barely over 39 mm.).

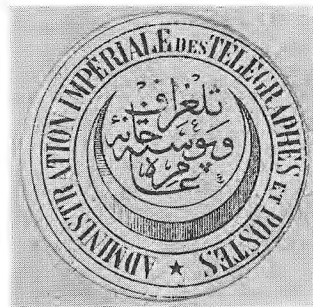
Type X. (1888-90). Inscribed as VII., etc. No town name except on postmark, and centre left blank for latter. Similar design to IX., but narrower outer band and larger stamp. Frame:—Triple outer and double inner lines. Blue on white (several shades). Size 40 mm.

Type XI. (1890). Similar to X., but whole outer band of solid colour, with inscription in white block letters

above, and Turkish in lower part, the two separated by a small asterisk of 5 dots each side. Frame:—Quadruple outer and single inner lines. Blue on white (several shades). Size 40 mm.



TYPE XI.



TYPE XII.

Type XII. Inscribed "Administration Impériale des Télégraphes et Postes". No town name. Large shaded crescent in centre, filled with Turkish inscription. (Was probably issued with Type VII. or VIII., but this is uncertain.) Frame:—Double outer and single inner lines. Black impression on colour. Size 37½ mm.

*Type XIII**. Inscribed "Gouverneur Générale du Liban" around outer frame in white block letters on plain red ground. Small star and crescent at top to separate ends of inscription. Turkish inscription in centre, which translated reads, "David 878". (This stamp was probably issued for the use of the Governor of the District of Mount Lebanon, in Syria, which is administrated separately, since 1861, by a Christian Governor under the general protection of the powers; Liban (or Libanus) being merely a variation in spelling of this name.)

* It has not been possible to present an illustration of this type, the only copy known being one in the Tapling Collection at the British Museum.—F.J.M.

All the above types are lithographed on wove paper, varying greatly in thickness. In all except Types VIII. and VIIIa. it would appear that an original design was used for all varieties of each type, and the town-name either added to the transfer, or printed afterwards. Many minor varieties of colour may be noted in most of the stamps, and in the red and blue issues (VII.-XI.) and to a lesser extent in Type V. the wearing of the impression shows very plainly in some copies, causing the whole to appear thicker and indistinct.

With regard to certain varieties of these stamps, recorded previously in other lists, but not found, either in the Tapling collection or in the large selections examined during the compilation of this list, it has been thought necessary to distinguish between those stamps which from their nature we think probably *do* exist, but so rarely as to have been missed by us; and those whose nature is such that existence seems highly improbable, and which would appear to have been listed originally only in error. In the following list

* Indicates probable existence.

? ,, unlikely ,,

It must be borne in mind that the above differentiation has depended upon the personal judgment of Mr. Harland and myself, and we have no guarantee of the absolute accuracy of our decisions.

O. MAY.

1st August, 1915.

Aba-el-Wakf.

No.	Type.	Die.	Spelling of Name.	Colour.
1	VII.	—	Aba-el-Wakf	Scarlet.
2	VIII.	—	Do.	Brown-red.
3	IX.	—	Do.	Blue.

Abu-Choukouk.

1	V.	E	Abu-el-Sceekuk	Black on azure.
2	VII.	—	Abou Choukouk	Scarlet.
3	VIII.	—	Abouchoukouk	Brown-red.
4	VIIIa.	—	Abou-Chouckouk	Pale red.

Abu-Hammad.

No.	Type.	Die.	Spelling of Name.	Colour.
1	VII.	—	Abou Hammad	Scarlet.
2	VIII.	—	Abou-Hamade	Brown-red.
3	VIIIa.	—	Do.	Pale red.
4	IX.	—	Abou-Hammad	Blue.

Abuhomus.

1	II.	—	Abahomos	Black on pale brown.*
2	—	—	Abuhomus	Black on pale rose.
3	III.	—	Abuhomos	Lake-mauve.
4	—	—	Abuhomus	Carmine.?
5	—	—	Do.	Deep brown.
6	IV.	A	Do.	Black on yellow.
7	—	—	Do.	Black on yellow-green.?
8a	V.	B	Do.	Black on bistre.
b	—	C	Do.	Do.
c	—	D	Do.	Do.
9	—	C	Do.	Black on pale chocolate.
10	—	E	Abuhomus	Scarlet.
11	VII.	—	Do.	Do.
12	VIII.	—	Abouhomus	Brown-red.
13	VIIIa.	—	Abou-Homus	Pale red.*
14	IX.	—	Abou-Hommos	Blue.

Abu-Kebir.

1	VII.	—	Abou Kebir	Scarlet.
2	VIII.	—	Aboukibir	Brown-red.
3	VIIIa.	—	Abou-Kébir	Pale red.
4	IX.	—	Do.	Blue.

Abu-Kerkas.

1	VII.	—	Abou Kerkas	Scarlet.
2	VIII.	—	Abou-Kerkas	Brown-red.
3	VIIIa.	—	Do.	Pale red.
4	IX.	—	Abou-Korkas	Blue.

Abukir.

1	VIII.	—	Aboukir	Brown-red.
---	-------	---	----------------	------------

Abutig.

1	VII.	—	Aboutik	Scarlet.
3	VIIIa.	—	Aboutig	Pale red.

Adaref.

1	VIIa.	—	Adaref	Scarlet.
---	-------	---	---------------	----------

Akhmim.

1	VIIIa.	—	Akhmim	Pale red.
2	IX.	—	Do.	Blue.

Alexandretta.

1	IV.	B	Alessandretta	Pearl-grey.
---	-----	---	----------------------	-------------

Alexandria.

No.	Type.	Die.	Spelling of Name.	Colour.
1	I.	—	Alessandria	Black on bistre.*
2	II.	—	Do.	Black on pale rose.
3	III.	—	Do.	Red-violet.
4	IV.	A	Do.	Black on pale rose.
5	—	B	Do.	Do.
6	—	B	Do.	Black on lilac-rose.
(Nos. 4-6—town name 24mm. long.)				
7	—	B	Do.	Black on lilac-rose.
(Wider lettering: word 26½mm. long.)				
8	—	—	Do.	Grey.?
9	V.	A	Do.	Black on lilac-rose.
10a	—	B	Do.	Do.
b	—	C	Do.	Do.
c	—	D	Do.	Do.
11	—	—	Do.	Green on azure.?
12	—	E	Do.	Black on French grey.
13	—	E	Do.	Black on blue-green.
14	—	E	Do.	Scarlet.
15	—	E	Do.	Scarlet on azure.?
(Nos. 12-15—name in bolder lettering.)				
16	VII.	—	Alexandrie	Scarlet.
17	VIII.	—	Do.	Brown-red.
18	IX.	—	Do.	Blue.

Direzione Generale: Alexandria.

1	IIIa.	—	Alessandria	Carmine-red.
2	—	—	Do.	Dull rose.
3	—	—	Do.	Sea green.*
4	IIIb.	—	Unnamed	Carmine-red.
5	—	—	Do.	Dull rose.
6	—	—	Do.	Sea green.*
7	IVa	—	Alessandria	Red and green.
8	IVb	—	Do.	Gold.
9	Va.	—	Do.	Do.
10	VI.	—	Do.	Lake.
11	—	—	Do.	Deep blue.
12	—	—	Do.	Sky blue.
13	—	—	Do.	Indigo on buff.
14	—	—	Do.	Indigo on deep blue.
15	—	—	Do.	Indigo on green.
16	—	—	Do.	Dark blue on lilac-rose.
17	—	—	Do.	Blue on bluish.
18	—	—	Do.	Black on buff.*
19	—	—	Do.	Black on vermilion.
20	—	—	Do.	Red on blue-violet.*
21	—	—	Do.	Red on mauve.*
22	—	—	Do.	Red on greenish.
23	—	—	Do.	Carmine on rose.

No.	Type.	Die.	Spelling of Name.	Colour.
24	VIa.	—	Unnamed	Rose-red.
25	—	—	Do.	Blue.
26	—	—	Do.	Dark blue.
27	—	—	Do.	Blue on mauve.
28	—	—	Do.	Red-brown.*
(Nos. 24-28—"Direttore-Generale.")				
29	VIIb.	—	Do.	Lake.
30	—	—	Do.	Blue.
31	—	—	Do.	Dark blue.
(Nos. 29-31—"Vice-Direttore.")				

Ariche.

1	IX.	—	Ariche	Blue.
---	-----	---	---------------	-------

Aschmant.

1	VII.	—	Aschmouth (error) ...	Scarlet.*
2	VIII.	—	Armanth (error) ...	Brown-red.
3	—	—	Aschmanth	Do.
4	VIIIa.	—	Aschmante	Pale red.
5	IX.	—	Achmant	Blue.

Assiut.

1a	V.	B	Siut	Purple.
b	—	C	Do.	Do.
c	—	D	Do.	Do.
2	—	E	Do.	Pale mauve.
(Name in larger lettering.)				
3	—	E	Assiut	Black on pale yellow.
4	—	—	Do.	Black on greenish-blue.?
5	—	—	Do.	Black on rose.?
6	VII.	—	Assiout	Scarlet.
7	VIII.	—	Do.	Brown-red.
8	VIIIa.	—	Do.	Pale red.
9	IX.	—	Do.	Blue.

Assouan.

1a	V.	B	Assouan	Brown.
b	—	C	Do.	Do.
c	—	D	Do.	Do.
2	VII.	—	Do.	Scarlet.
(Wide lettering: name 25½mm. long.)				
3	—	—	Do.	Scarlet.
(Narrow lettering: name 21mm. long.)				
4	IX.	—	Do.	Blue.

Atfé.

1	I.	—	Atfe	Black on —.*
2	II.	—	Do.	Black on yellow.
Prominent variety: majority of bar to A missing—"A".				
3	—	—	Vtfe (error)	Black on yellow.*
4	—	—	Atfe	Black on brown.*

No.	Type.	Die.	Spelling of Name.	Colour.
5	III.	—	Atfe	Light grey-blue.
6	—	—	Do.	Dark grey-blue.
7	IV.	B	Do.	Black on bistre.
8	—	—	Do.	Black on green.?
9a	V.	B	Do.	Black on bistre.
b	—	C	Do.	Do.
c	—	D	Do.	Do.
10	—	E	Do.	Do.
(Name in larger lettering.)				
11	VIII.	—	Atfé	Brown-red.
12	VIIIa.	—	Do.	Pale red.
13	IX.	—	Do.	Blue.

Balliana.

1	VIII.	—	Balliana	Brown-red.
2	VIIIa.	—	Balliana	Pale red.

Beba.

1	VIIIa.	—	Bibeh	Pale red.
2	IX.	—	Beba	Blue.

Bedrechein.

1	VII.	—	Bedrechein	Scarlet.
2	VIII.	—	Bedrichin	Brown-red.
3	VIIIa.	—	Bedrechein	Pale red.
4	IX.	—	Badrechein	Blue.

Benha.

1	I.	—	Benha	Black on deep green.
2	II.	—	Benka	Black on pale grey-green.
3	—	—	Benha	Black on bistre.*
4	III.	—	Do.	Grey.
5	—	—	Do.	Slate-blue.
6	IV.	A	Do.	Black on pale brown.

Three varieties of No. 6, viz.—
 (a) 3 large misplaced stops after name.
 (b) One small stop.
 (c) No stop (normal).

7	—	B	Do.	Do.
8a	V.	B	Do.	Black on yellow-brown.
b	—	C	Do.	Do.
c	—	D	Do.	Do.
9	—	—	Do.	Black on grey.?
10	—	C	Do.	Black on red-brown.
11	—	E	Do.	Black on yellow-brown.
12	—	E	Do.	Scarlet.
(Nos. 11 and 12—name in bolder lettering.)				
13	VII.	—	Do.	Scarlet.
14	VIII.	—	Do.	Brown-red.
15	VIIIa.	—	Do.	Pale red.
16	IX.	—	Do.	Blue.
(Wide lettering: name 18½mm. long.)				
17	—	—	Do.	Blue.
(Narrow lettering: name 15mm. long.)				

Beni-Gorrah.

No.	Type.	Die.	Spelling of Name.	Colour.
1	VIII.	—	Beni-Gorrah	Brown-red.
2	VIIIa.	—	Beni-Korrah	Pale red.

Beni-Mazar.

1	VII.	—	Beni Mazar	Scarlet.
2	VIII.	—	Benimazar	Brown-red.
3	VIIIa.	—	Beni-Mazar	Pale red.
4	IX.	—	Do.	Blue.

Benisuef.

1	IV.	A	Benisueff	Black on bistre.
2	—	A	Do.	Black on greyish-white.
3a	V.	B	Do.	Black on greyish-white.
b	—	C	Do.	Do.
c	—	D	Do.	Do.
4	—	E	Do.	Black on grey-bistre.
5	—	E	Do.	Black on dull purple.
(Nos. 4 and 5—name in larger lettering.)				
6	VII.	—	Bénisouéff	Scarlet.
7	VIII.	—	Benisouef	Brown-red.
8	VIIIa.	—	Benissouef	Pale red.

Berber.

1	V.	B	Barbar	Dull red-bistre.
2a	—	B	Do.	Vermilion.
b	—	C	Do.	Do.
c	—	D	Do.	Do.
3	VIIIa.	—	Do.	Pale red.

Berbera.

1	VIIIa.	—	Barbara	Pale red.
---	--------	---	----------------	-----------

Beyrout.

1	IV.	B	Bairouth	Violet.
---	-----	---	-----------------	---------

Bilbes.

1	III.	—	Bilbes	Ochre.
2	IV.	B	Do.	Black on blue.
3a	V.	B	Do.	Black on blue.
b	—	C	Do.	Do.
4	VIII.	—	Do.	Brown-red.

Birket-el-Sab.

1	I.	—	Birket-el-Sab	Black on brown-rose.
2	II.	—	Do.	Black on orange.
3	III.	—	Do.	Deep green.
4	—	—	Do.	Blue-green.
5	—	—	Birket-el-Saat (error)... ..	Do.
6	IV.	B	Birket-el-Sab	Black on grey.
7	V.	A	Do.	Black on lavender.
8a	—	B	Do.	Black on lavender.

No.	Type.	Die.	Spelling of Name.	Colour.
8b	V.	C	Birket-el-Sab	Black on lavender.
c	—	D	Do.	Do.
9a	—	C	Do.	Black on bistre-grey.
b	—	D	Do.	Do.
10	—	—	Do.	Black on rose.?
11	—	E	Do.	Scarlet.
(Name in block lettering.)				
12	VII.	—	Do.	Scarlet.
13	VIII.	—	Birket-el-Sabh	Brown-red.
14	IX.	—	Birket-el-Sab	Blue.
Bordein.				
1	VII.	—	Bordein	Scarlet.
2	VIII.	—	Do.	Brown-red.
3	VIIIa.	—	Do.	Pale red.
4	IX.	—	Do.	Blue.
Bouha.				
1	VII.	—	Bouha	Scarlet.
2	VIII.	—	Do.	Brown-red.
3	VIIIa.	—	Bouah	Pale red.
4	IX.	—	Bouha	Blue.
Boulak.				
1	VII.	—	Boulak	Scarlet.
2	VIII.	—	Do.	Brown-red.
3	VIIIa.	—	Do.	Pale red.
4	IX.	—	Boulac (Caire)	Blue.
Boulak-el-Dakrou.				
1	VIII.	—	Boulak-Dacrou	Brown-red.
2	VIIIa.	—	Boulak-Dakrou	Pale red.
3	IX.	—	Boulak-el-Dakrou	Blue.
Cairo.				
1	I.	—	Cairo	Black on light brown.*
2	II.	—	Do.	Black on yellow-green.*
3	—	—	Do.	Black on grey-violet.*
4	III.	—	Do.	Dull black.
5	IV.	A	Do.	Black on greenish blue.
6	—	A	Do.	Black on light blue.
7	—	A	Do.	Black on red-brown.
8	—	B	Do.	Do.
(Nos. 5-8—narrow lettering: name 16mm. long.)				
9	—	B	Cairo	Black on red-brown.
(Wider letters: name 20mm. long.)				
10a	V.	B	Do.	Black on red-brown.
b	—	C	Do.	Do.
c	—	D	Do.	Do.
11	—	—	Do.	Black on blue.?
12a	—	B	Do.	Black on white.
b	—	C	Do.	Do.
c	—	D	Do.	Do.

No.	Type.	Die.	Spelling of Name.	Colour.
13	V.	E	Cairo	Black on white.
14	—	E	Do.	Black on mauve.
(Nos. 13 and 14—name in thinner lettering.)				
15	VII.	—	Caire	Scarlet.
(Dull colour: medium letters and R of "Cairo" thus: "R".)				
16	—	—	Do.	Scarlet.
(Brighter colour: thicker letters and R of "Cairo" thus: "R".)				
17	—	—	Do.	Scarlet.
(No. 16: Surcharged "Franca" diagonally in black script letters.)				
18	VIII.	—	Do.	Brown-red.
19	VIIIa.	—	Do.	Pale red.
20	IX.	—	Do.	Blue.
Italian Diplomatic Agency, Cairo.				
21	Ia.	—	Cairo	Dull blue.
Cavalla.				
1	IV.	B	Cavalla	Chocolate.
Chabas.				
1	VIIIa.	—	Chabas	Pale red.
Chaka.				
1	VIIa.	—	Chaka	Scarlet.
Chaluf-el-Taraba.				
1	IV.	A	Chaluf-el-Taraba	Black on lake-rose.
Chandawil.				
1	VIIIa.	—	Chandawil	Pale red.
2	IX.	—	Do.	Blue.
Chibriket.				
1	VIII.	—	Chibriket	Brown-red.
Colosna.				
1	VII.	—	Colosnah	Scarlet.
2	VIII.	—	Do.	Brown-red.
3	VIIIa.	—	Colosna	Pale red.
Constantinople.				
1	III.	—	Konstantinopoli	Red.
(A variety of this exists with stop after name.)				
2	—	—	Costantinopoli	Red.
3	IV.	—	Do.	Black on rose.?
4	V.	A	Do.	Ochre-red.

Damanhour.

No.	Type.	Die.	Spelling of Name.	Colour.
1	I.	—	Damanhour	Black on —.*
2	II.	—	Do.	Black on iron grey.
3	III.	—	Do.	Light green.
4	—	—	Do.	Blue-green.
5	—	—	Damanhur (error)	Do.
6	IV.	A	Damanhour	Black on bistre.
7	—	B	Do.	Do.
8	V.	A	Do.	Black on ochre-brown.
9a	—	B	Do.	Black on ochre-brown.
b	—	C	Do.	Do.
c	—	D	Do.	Do.
10	—	B	Do.	Black on pale chocolate.
11	—	E	Do.	Scarlet. (Name in block lettering.)
12	—	E	Do.	Do. on azure.?
13	VII.	—	Do.	Scarlet.
14	IX.	—	Do.	Blue.

Damiata.

1	I.	—	Damiata	Black on pinkish.
2	II.	—	Do.	Black on lemon.
3	III.	—	Do.	Indigo.
4	—	—	Do.	Blue.
5	—	—	Do.	Yellow-green.?
6	IV.	B	Do.	Black on pea-green.
7a	V.	B	Do.	Black on pea-green.
b	—	C	Do.	Do.
c	—	D	Do.	Do.
8	—	—	Do.	Black on rose.?
9	—	E	Do.	Black on yellow. (Name in bolder lettering.)
10	VII.	—	Damiette	Scarlet.
11	VIII.	—	Do.	Brown-red.
12	VIIIa.	—	Do.	Pale red.
13	IX.	—	Do.	Blue.

Dara.

1	VIIa.	—	Dara	Scarlet.
---	-------	---	-------------	----------

Dardanelli.

1	IV.	B	Dardanelli	Black on lemon buff.
2	V.	A	Do.	Black on lemon buff.
3	—	—	Do.	Black on green.?
4	—	E	Do.	Scarlet. (Name in block lettering.)

Dechna.

1	VIII.	—	Dechnah	Brown-red.
2	VIIIa.	—	Dechna	Pale red.

Dekernes.

No.	Type.	Die.	Spelling of Name.	Colour.
1	VIIIa.	—	Dekernis	Pale red.
2	IX.	—	Dekernes	Blue.

Dessuk.

1	IV.	A	Desuk	Black on grey.
2	—	B	Do.	Do.
3	—	B	Do.	Black on yellow-grey.
4	—	B	Do.	Black on white.
5	—	B	Do.	Black on slate-blue.
6	V.	—	Do.	Black on blue-green.*
7	—	E	Dessug	Scarlet. (Name in bolder lettering.)
8	VIIIa.	—	Dessouk	Scarlet.
9	VIII.	—	Do.	Brown-red.
10	VIIIa.	—	Do.	Pale red.

Deyrout.

1	VII.	—	Deyrout	Scarlet.
2	VIII.	—	Deyrout	Brown-red.
3	VIIIa.	—	Do.	Pale red.
4	IX.	—	Deirout	Blue.

Dongola.

1a	V.	B	Dongola	Pale grey-brown.
b	—	C	Do.	Do.
c	—	D	Do.	Do.
2	—	D	Do.	Light-brown.
3	VIII.	—	Do.	Brown-red.
4	VIIIa.	—	Do.	Pale red.

Economato.

1	V.	A	Sezione Economato	Mauve.
2a	—	B	Do.	Mauve.
b	—	D	Do.	Do.
3	—	—	Do.	Mauve on green.?
4	—	E	Economato	Black on magenta. (Name in block lettering.)
5	VII.	—	Economat	Scarlet. (Name in thin block letters.)
6	—	—	Do.	Scarlet. (Name in thick block letters: smaller.)
7	VIII.	—	Do.	Brown-red.
8	VIIIa.	—	Do.	Pale red.
9	IX.	—	Do.	Blue.

Edfou.

1	VIII.	—	Edfou	Brown-red.
2	VIIIa.	—	Do.	Pale red.

Edkou.

No.	Type.	Die.	Spelling of Name.	Colour.
1	VIII.	—	Etkou	Brown-red.
2	VIIIa.	—	Edkou	Pale red.
3	IX.	—	Do.	Blue.

Edwa.

1	VIII.	—	Edona (error for Edoua)	Brown-red.
2	VIIIa.	—	Edwa	Pale red.

El-Abiad.

1	VIIa.	—	El-Abiad	Scarlet.
---	-------	---	-----------------	----------

El-Ayat.

1	VIII.	—	El-Ayat	Brown-red.
2	VIIIa.	—	Do.	Pale red.

El-Facher.

1	VIIa.	—	El-Facher	Scarlet.*
---	-------	---	------------------	-----------

El-Gisr.

1	IV.	A	El Gisr	Black on pink.
2	—	B	Do.	Do.
3	—	B	Do.	Grey on pink.

El-Kalabat.

1	VIIa.	—	El Kalabat	Scarlet.
---	-------	---	-------------------	----------

El-Manachi.

1	VIII.	—	El-Manachi	Brown-red.
2	VIIIa.	—	Do.	Pale red.

El-Meslemieh.

1	VIIa.	—	El Meslemieh	Scarlet.
---	-------	---	---------------------	----------

Embabe.

1	IV.	B	Embabe	Black on pale rose.
2	—	B	Do.	Black on lilac rose.

Enchasse.

1	VII.	—	Enchasse	Scarlet.
2	VIII.	—	Do.	Brown-red.
3	VIIIa.	—	Do.	Pale red.
4	IX.	—	Enchas	Blue.

Esna.

1a	V.	C	Esna	Blue.
b	—	D	Do.	Do.
2	VII.	—	Esneh	Scarlet.
3	VIII.	—	Esné	Brown-red.
4	VIIIa.	—	Esna	Pale red.
5	IX.	—	Do.	Blue.

Facous.

No.	Type.	Die.	Spelling of Name.	Colour.
1	VII.	—	Facouss	Scarlet.
2	VIII.	—	Do.	Brown-red.
3	VIIIa.	—	Do.	Pale red.
4	IX.	—	Facous	Blue.

Farschût.

1	VIIIa.	—	Farchout	Pale red.
---	--------	---	-----------------	-----------

Fashoda.

1	VIIa.	—	Fachouda	Scarlet.
---	-------	---	-----------------	----------

Fayum.

1	IV.	A	Medinet el Faium ...	Black on pale grey-lilac.
2	—	B	Do.	Do.
3	—	B	Do.	Black on light brown.
4a	V.	C	Fayum	Ultramarine.
b	—	D	Do.	Do.
5	—	—	Do.	Ultramarine on azure.?
6	—	E	Do.	Deep blue.
7	—	E	Do.	Sky-blue.
				(Nos. 6 and 7—name in larger lettering.)
8	VII.	—	Do.	Scarlet.
9	VIII.	—	Fayoum	Brown-red.
10	VIIIa.	—	Do.	Pale red.
11	IX.	—	Do.	Blue.

Fazoglu.

1	VIIa.	—	Fazoglou	Scarlet.
---	-------	---	-----------------	----------

Fescne.

1	IV.	A	Fascne	Black on rose-lilac. (Thin paper.)
2	—	A	Do.	Black on slate.
3	—	A	Do.	Black on slate-lilac. (Nos. 2 and 3—thick paper.)
4a	V.	B	Do.	Black on purple.
b	—	C	Do.	Do.
c	—	D	Do.	Do.
5	—	E	Fescne	Black on violet. (Name in bolder letters.)
6	VII.	—	Fescne (error)	Scarlet.*
7	—	—	Fescne	Do.
				Nos. 6 and 7—name in bold thick Roman type.)
8	—	—	Fechne	Scarlet. (Name in thin sans-serif type.)
9	VIII.	—	Do.	Brown-red.
10	VIIIa.	—	Do.	Pale red.
11	IX.	—	Fachn	Blue.

Foua.

1	VIII.	—	Foua	Brown-red.
2	VIIIa.	—	Fouah	Pale red.

Galiub.

No.	Type.	Die.	Spelling of Name.	Colour.
1	I.	—	Galiut (error)	Black on carmine.*
2	II.	—	Galiub	Black on green.*
3	III.	—	Do.	Green.
4	—	—	Do.	Deep green.
5	IV.	A	Do.	Black on red-brown.
6	—	B	Do.	Do.
7	V.	A	Do.	Black on red-brown.
8	—	A	Do.	Black on grey-brown.
9	VII.	—	Galioub	Scarlet.
10	VIII.	—	Do.	Brown-red.
11	VIIIa.	—	Do.	Pale red.
12	IX.	—	Kalioub	Blue.

Gallin.

1	VIII	—	Gallin	Brown-red.
2	VIIIa.	—	Kalleen	Pale red.

Gallipoli.

1	IV.	B	Gallipoli	Yellow-green.
2	—	B	Do.	Green.

Gedda.

1	III.	—	Gedda	Blue-grey.
2	—	—	Do.	Slate.
3	—	—	Gfdada (error)	Do.*
4	—	—	Gedda	Dark blue.
5	V.	E	Do.	Scarlet.

(Wide Roman lettering.)

Gherga.

1a	V.	B	Gherga	Red-brown.
b	—	D	Do.	Do.
2	—	B	Do.	Black on brown.*
3	VIII.	—	Ghirga	Brown-red.
4	VIIIa.	—	Guergha	Pale red.

(Prominent variety: showing flaw in name plate between "R" and "G".)

5	IX.	—	Guerga	Blue.
---	-----	---	---------------	-------

Ghiza.

1	IV.	A	Ghiza	Black on lilac-blue.
2	—	A	Do.	Black on grey.
3	—	B	Do.	Do.
3a	—	—	Do.	Black on pale green.?
4a	V.	B	Do.	Black on grey.
b	—	D	Do.	Do.
5a	—	B	Do.	Black on azure.
b	—	C	Do.	Do.
c	—	D	Do.	Do.

No.	Type.	Die.	Spelling of Name.	Colour.
6	VII.	—	Ghizeh	Scarlet.
7	VIII.	—	Ghiseh	Brown-red.
8	VIIIa.	—	Ghizeh	Pale red.
9	IX.	—	Guiza	Blue.

Godaba.

1a	V.	B	Godaba	Ochre.
b	—	C	Do.	Do.
c	—	D	Do.	Do.
2	VIII.	—	Goddaba	Brown-red.
3	VIIIa.	—	Do.	Pale red.

Gotour.

1	VII.	—	Koutour	Scarlet.
2	—	—	Gotour	Do.
3	VIII.	—	Do.	Brown-red.
4	VIIIa.	—	Do.	Pale red.

Gourieh.

1	VII.	—	Gourrieh	Scarlet.
2	VIII.	—	Gourieh	Brown-red.
3	VIIIa.	—	Gourieh	Pale red.
4	IX.	—	Ghouria	Blue.

Gouss.

1	VIIIa.	—	Gouss	Pale red.
---	--------	---	--------------	-----------

Hadra.

1	VII.	—	Hadra	Scarlet.
2	VIII.	—	Do.	Brown-red.
3	VIIIa.	—	Do.	Pale red.

Hehya.

1	VII.	—	Hehza (error)	Scarlet.
2	VIII.	—	Hyhya	Brown-red.
3	IX.	—	Hehya	Blue.

Helouan.

1	VIIa.	—	Hellouan	Scarlet.
2	IX.	—	Helouan	Blue.

Ismailia.

1	III.	—	Jsmilia (error)	Yellow-green.
2	—	—	Jsmaila (error)	Do.?
3	—	—	Jsmailia	Green.

(There is a variety of this with a large green dot between 2nd and 3rd line of Arabic.)

4	IV.	B	Ismailia	Black on bright blue.
5	V.	A	Do.	Black on blue.
6a	—	B	Do.	Do.
b	—	C	Do.	Do.
c	—	D	Do.	Do.

No.	Type.	Die.	Spelling of Name.	Colour.
7	V.	E	Ismailia	Scarlet. (Name in block lettering.)
8	VII.	—	Do.	Scarlet.
9	VIII.	—	Do.	Brown-red.
10	VIIIa.	—	Ismailieh	Pale red.
11	IX.	—	Ismailia	Blue.

Jaffa.

1	IV.	B	Jaffa	Dark blue.
---	-----	---	--------------	------------

Kafr-Amar.

1	VII.	—	Kafre Amar	Scarlet.
2	VIII.	—	Kafr-Ammar	Brown-red.
3	VIIIa.	—	Kafr-Amar	Pale-red.

Kafr-Daoud.

1	VII.	—	Kafre Dawoud	Scarlet.
2	VIII.	—	Kafr-Daoud	Brown-red.
3	VIIIa.	—	Kaer-Daoud (error)	Pale red.

Kafr-el-Cheik.

1	VII.	—	Kafr-Cheih	Scarlet.
2	—	—	Kafre-Cheik	Do.
3	VIII.	—	Kafr-Cheik	Brown-red.
4	VIIIa.	—	Kafre-el-Cheih	Pale red.
5	IX.	—	Kafr-el-Cheik	Blue.

Kafr-el-Dauar.

1	II.	—	Kafer Duar	Black on dark blue.
2	III.	—	Jbafi-el-Dauar (error)	Deep yellow.
3	—	—	Jrafia-el-Dauar (error)	Do.*
4	—	—	Kafr-el-Dauar	Lemon.
5	IV.	B	Do.	Black on blue.
6	V.	—	Kafr-el-Chuar (error)	Do.*
7	—	E	Kafr-el-Dauar	Do.
8	VIII.	—	Kafr-Daouar	Brown-red.
9	VIIIa.	—	Kafre-el-Daouar	Pale red.

Kafr-el-Zayat.

1	I.	—	Kafer-Zayat	Black on light brown.*
2	II.	—	Kafer Zayat	Black on grey-brown.
3	III.	—	Jbafi-Zajat (error)	Olive-yellow.
4	—	—	Kafr-el-Zayat	Do.
5	—	—	Do.	Rose.?
6	IV.	A	Do.	Black on lake.
7	—	B	Do.	Do.
8a	V.	B	Do.	Do.
b	—	C	Do.	Do.
c	—	D	Do.	Do.
9	—	E	Do.	Do.
				(Name in larger lettering.)
10	—	—	Do.	Black on slate.?

No.	Type.	Die.	Spelling of Name.	Colour.
11	VII.	—	Kafr-el-Zayat... ..	Scarlet. (Name in Roman lettering.)
12	—	—	Kafr-Zayat	Scarlet. (Name in block lettering.)
13	VIII.	—	Do.	Brown-red.

Kalkal.

1	VIIa.	—	Kalkal	Scarlet.
---	-------	---	---------------	----------

Kantara.

1	IV.	A	Kantara	Black on light yellow.
2	—	B	Do.	Black on yellow.
3	VIIIa.	—	Do.	Pale red.

Karaskou.

1a	V.	B	Karaskou	Dark violet.
b	—	C	Do.	Do.
c	—	D	Do.	Do.
2	—	D	Do.	Grey-lilac.
3	VII.	—	Korosko	Scarlet.*
4	VIIIa.	—	Do.	Pale red.

Kassala.

1a	V.	C	Kassala	Bright mauve.
b	—	D	Do.	Do.

Kena.

1a	V.	B	Kena	Carmine-red.
b	—	C	Do.	Do.
c	—	D	Do.	Do.
2	VII.	—	Keneh	Scarlet.*
3	VIII.	—	Kené	Brown-red.
4	VIIIa.	—	Keneh	Pale red.
5	IX.	—	Kena	Blue.

Khartûm.

1a	V.	B	Kartum	Bright green.
b	—	C	Do.	Do.
2	VII.	—	Kartoum	Scarlet.*
3	VIIIa.	—	Do.	Pale red.

Khatatba.

1	VIIa.	—	Khatatbe	Scarlet.
2	IX.	—	Khatatba	Blue.

Kilometro 83.

1	IV.	B	Kilometro 83	Black on pale yellow.
2	V.	—	Do.	Black on blue.*

Kom-Hamadé.

1	VIII.	—	Com-Hamadeh	Brown-red.
2	VIIIa.	—	Kom-Hamadé	Pale red.

Korachieh.

No.	Type.	Die.	Spelling of Name.	Colour.
1	VIII.	—	Korachieh	Brown-red.
2	VIIIa.	—	Korrachieh	Pale red.

Lagos.

1	IV.	B	Lagos	Chestnut-brown.
---	-----	---	--------------	-----------------

Latachia.

1	IV.	—	Latschia	Pale rose.*
2	V.	A	Latachia	Orange-red.
3	—	A	Do.	Pale brown.

Lebanon (Governor-General).

1	XIII.	—	Liban	Deep scarlet.
---	-------	---	--------------	---------------

(This stamp appears in the Tapling Collection: beyond the information contained in the list of types, I know nothing concerning it.)

Luxor.

1a	V.	B	Luxor	Olive-bistre.
b	—	C	Do.	Do.
c	—	D	Do.	Do.
2	—	C	Do.	Light olive.
3	VII.	—	Louxor	Scarlet.
4	—	—	Do.	Scarlet.
(Wide lettering: name 25mm. long.)				
5	VIIIa.	—	Do.	Pale red.
6	IX.	—	Do.	Blue.
(Narrow lettering: name 17mm. long.)				

Magaga.

1	IV.	A	Magaga	Black on lemon.
2	—	B	Do.	Do.
3	—	B	Do.	Black on pale bistre.
4	—	—	Do.	Black on red.?
5a	V.	B	Do.	Black on yellow.
b	—	C	Do.	Do.
c	—	D	Do.	Do.
6	—	—	Do.	Black on brown-red.?
7	—	—	Do.	Black on green.?
8	—	E	Do.	Black on yellow.
9	—	E	Do.	Black on olive-yellow.
(Nos. 8 and 9—name in larger lettering.)				
10	VII.	—	Do.	Scarlet.
11	VIII.	—	Do.	Brown-red.
12	VIIIa.	—	Do.	Pale red.
13	IX.	—	Maghagha	Blue.

Mahalla.

1	I.	—	Michalla	Black on yellow.*
2	II.	—	Do.	Black on French grey.

No.	Type.	Die.	Spelling of Name.	Colour.
3	III.	—	Mahalla	Ochre-red.
4	—	—	Do.	Ochre-yellow.
5	—	—	Do.	Pale cinnamon.
(A distinct and peculiar colour, approximating to a light pink.)				
6	IV.	—	Do.	Black on brown.?
7	—	B	Do.	Black on rich orange.
8a	V.	B	Do.	Black on orange.
b	—	D	Do.	Do.
9a	—	B	Do.	Black on orange-salmon.
b	—	D	Do.	Do.
10	—	—	Do.	Black on deep brown.?
11	VII.	—	Mehalla	Scarlet.
12	VIII.	—	Méhalla	Brown-red.
13	IX.	—	Mahalla	Blue.

Mahallet-Abou-Ali.

1	VIII.	—	Méhallet-Abou-Ali ...	Brown-red.
2	VIIIa.	—	Mahallet-Abou-Aly ...	Pale red.

Mahallet-Domana.

1	VIIIa.	—	Mahallat-Domana ...	Pale red.
2	IX.	—	Mahallet-Damana ...	Blue.

Mahallet-Kebir.

1	VIIIa.	—	Mahalle-Kibir	Pale red.
---	--------	---	----------------------	-----------

Mahallet-Malek.

1	VIII.	—	Méhallet-Malek	Brown-red.
---	-------	---	-----------------------	------------

Mahallet-Moussa.

1	VIII.	—	Méhallet-Moussa	Brown-red.
2	VIIIa.	—	Mahallet-Moussa	Pale red.

Mahallet-Roh.

1	III.	—	Mahallat Roh	Orange-brown.
2	—	—	Do.	Red-brown.
3	—	—	Mahalleh Roh (error)	Do.*
4	IV.	A	Mahallet Rok	Black on yellow-brown.
5	—	B	Do.	Do.
6	V.	E	Mahallet Roh	Black on reddish-brown.
7	—	—	Do.	Black on slate.?
(Nos. 6 and 7—large tall letters: name too long for space provided.)				
8	VII.	—	Mehallet Roh	Scarlet.
9	VIIIa.	—	Mahallet-Roh	Pale red.
10	IX.	—	Do.	Blue.

Manchieh.

1	VIIIa.	—	Manchieh	Pale red.
2	IX.	—	Manchah	Blue.

Manfalut.

No.	Type.	Die.	Spelling of Name.	Colour.
1a	V.	B	Manfalut	Black on pale green.
b	—	C	Do.	Do.
2	—	—	Do.	Black on blue. ?
3	VII.	—	Manfalout	Scarlet.
4	VIII.	—	Do.	Brown-red.
5	VIIIa.	—	Do.	Pale red.

Mansura.

1	I.	—	Mansura	Black on dark green.*
2	II.	—	Do.	Black on grey.*
3	III.	—	Do.	Lilac.
4	IV.	A	Do.	Black on reddish-brown.
5	—	A	Do.	Black on grey-brown.
6	—	B	Do.	Do.
7	—	B	Do.	Black on greyish-white.
8a	V.	B	Do.	Black on grey-brown.
b	—	C	Do.	Do.
c	—	D	Do.	Do.
9a	—	B	Do.	Black on brown.
b	—	C	Do.	Do.
c	—	D	Do.	Do.
10	—	E	Do.	Scarlet.
11	—	E	Do.	Scarlet on azure. ?

(Nos. 10 and 11—name in bolder lettering.)

12	VII.	—	Do.	Scarlet.
13	VIII.	—	Mansoura	Brown-red.
14	VIIIa.	—	Mansourah	Pale red.
15	IX.	—	Mansoura	Blue.

Manzala.

1	VIIIa.	—	Manzaleh	Pale red.
2	IX.	—	Manzala	Blue.

Maragha.

1	VIIIa.	—	Maraga	Pale red.
2	IX.	—	Maragha	Blue.

Massawa.

1	IV.	A	Massaua	Black on green.
2	VIII.	—	Massaoua	Brown-red.
3	VIIIa.	—	Massawa	Pale red.

Matahna.

1	VII.	—	Matahne	Scarlet.
2	VIII.	—	Do.	Brown-red.
3	VIIIa.	—	Mattahna	Pale red.

Matai.

1	VII.	—	Mallaz (errors)	Scarlet.*
2	—	—	Mataz (error)	Do.*
3	VIII.	—	Mattay	Brown-red.
4	VIIIa.	—	Matay	Pale red.
5	IX.	—	Matai	Blue.

Mataria.

No.	Type.	Die.	Spelling of Name.	Colour.
1	VIIIa.	—	Mataria	Pale red.

Mellawi.

1a	V	B	Mellai	Black on French grey.
b	—	C	Do.	Do.
c	—	D	Do.	Do.
2	—	E	Do.	Scarlet.
3	—	E	Do.	Scarlet on azure. ?

(Nos. 2 and 3—name in bolder lettering.)

4	VIII.	—	Mellaoui	Brown-red.
5	VIIIa.	—	Mallaoui	Pale red.
6	IX.	—	Mallawi	Blue.

Menuf.

1	V.	A	Minuf	Sky blue.
2a	—	C	Do.	Do.
b	—	D	Do.	Do.
3a	—	B	Do.	Pale chocolate.
b	—	C	Do.	Do.
c	—	D	Do.	Do.
4	VII.	—	Minouf	Scarlet.
5	VIII.	—	Do.	Brown-red.
6	VIIIa.	—	Menouf	Pale red.
7	IX.	—	Do.	Blue.

Mersina.

1	V.	A	Mersina	Deep orange.
---	----	---	----------------	--------------

Minet-el-Gamh.

1	III.	—	Minet-el-Gamp (error)	Orange-brown.
2	—	—	Do. do.	Cinnamon.
3	—	—	Minet-el-Gamh	Light red.
4	—	—	Do.	Blue. ?
5	IV.	B	Minet-el-Gam	Black on bistre.
6	—	B	Do.	Black on pale rose.
6a	V.	B	Do.	Do.
b	—	C	Do.	Do.
c	—	D	Do.	Do.
7	VII.	—	Minet-el-Gamh	Scarlet.
8	VIII.	—	Do.	Brown-red.
9	VIIIa.	—	Mit-Gamr	Pale red.
10	IX.	—	Mina-el-Kamh	Blue.

Minia.

1	IV.	A	Minia	Black on light blue.
2	V.	A	Do.	Do.
3	VII.	—	Minieh	Scarlet.
4	VIII.	—	Minie	Brown-red.
5	VIIIa.	—	Minieh	Pale red.
6	IX.	—	Minia	Blue.

Mit-Bera.

No.	Type.	Die.	Spelling of Name.	Colour.
1	VII.	—	Mit Berra	Scarlet.
2	VIII.	—	Mit-Berrah	Brown-red.
3	VIIIa.	—	Do.	Pale red.
4	IX.	—	Mit-Bera	Blue.

Mitylene.

1	IV.	B	Metelino	Lake.
---	-----	---	-----------------	-------

Nachart-Ghedid.

1	VIII.	—	Nachart Guidiel (error)	Brown-red.
2	VIIIa.	—	Nachart-Ghedid	Pale red.

Nakada.

1	IX.	—	Nakada	Blue.
---	-----	---	---------------	-------

Nawa.

1	VII.	—	Nawa	Scarlet.
2	VIII.	—	Naoua	Brown-red.

Nekleh.

1	VIII.	—	Nekleh	Brown-red.
---	-------	---	---------------	------------

Port-Saïd.

1	III.	—	Porto Saïd	Prussian blue.
2	IV.	B	Do.	Black on light green.
3a	V.	B	Do.	Do.
b	—	C	Do.	Do.
c	—	D	Do.	Do.
4	—	E	Porto-Saïd	Black on bright green. (Name in block lettering.)
5	VII.	—	Port-Saïd	Scarlet.
6	VIII.	—	Do.	Brown-red.
7	VIIIa.	—	Do.	Pale red.
8	IX.	—	Do.	Blue.

Rahmanieh.

1	VIII.	—	Rahmanieh	Brown-red.
---	-------	---	------------------	------------

Ramleh.

1	II.	—	Ramle	Black on bistre.
2	IV.	B	Do.	Do.
3	—	—	Do.	Black on light green.?
4	V.	A	Do.	Black on bistre.
5	VII.	—	Ramleh	Scarlet.
6	VIII.	—	(Ramleh) Staz-Fleming	Brown-red.
7	VIIIa.	—	Ramleh (Station Bacos)	Pale red.
8	—	—	Do. (Station Bulkley)	Do.
9	—	—	Do. (Station Schutz)	Do.

Ramses.

1a	V.	B	Ramses	Black on orange-salmon.
b	—	C	Do.	Do.
c	—	D	Do.	Do.

Ras-el-Halig.

No.	Type.	Die.	Spelling of Name.	Colour.
1	VIII.	—	Ras-el-Alig	Brown-red.
2	VIIIa.	—	Ras-el-Halig	Pale red.
3	IX	—	Ras-el-Khalig	Blue.

Rhodes.

1	V.	E	Rodis	Scarlet.
2	VIII.	—	Rhodes	Brown-red.

Roda.

1	V.	A	Roda	Sepia.
2a	—	B	Do.	Brown.
b	—	D	Do.	Do.
3	VIII.	—	Do.	Brown-red.
4	VIIIa.	—	Rodah	Pale red.

Rosetta.

1	I.	—	Rosetta	Black on —, ?
2	V.	A	Do.	Deep orange.
3a	—	B	Do.	Orange-salmon.
b	—	C	Do.	Do.
c	—	D	Do.	Do.
4a	—	C	Do.	Golden-yellow.
b	—	D	Do.	Do.
5	—	E	Rosetta	Scarlet. (Name in larger letters.)
6	VIII.	—	Rosette	Brown-red.

Safiéh.

1	VIII.	—	Safiéh	Brown-red.
---	-------	---	---------------	------------

Sakha.

1	VIII.	—	Sakha	Brown-red.
2	VIIIa.	—	Do.	Pale red.

Salhagar.

1	VIII.	—	Salhagar	Brown-red.
---	-------	---	-----------------	------------

Salonica.

1	IV.	B	Salonico	Deep rose-red.
---	-----	---	-----------------	----------------

Samalût.

1	VIIIa.	—	Samalout	Pale red.
2	IX.	—	Do.	Blue.

Samanud.

1	I.	—	Samanud	Black on yellow-green.
2	II.	—	Do.	Do.*
3	—	—	Do.	Black on blue-green.
4	III.	—	Samanna (error)	Grey-green.?
5	—	—	Samanua (error)	Grey.
6	—	—	Do. do.	Slate-green.

No.	Type.	Die.	Spelling of Name.	Colour.
7	III.	—	Samanud	Deep olive.
8	IV.	B	Do.	Black on rose-lilac.
9	V.	C	Do.	Black on lilac-rose.
10	—	—	Do.	Black on slate.?
11	—	E	Do.	Black on lilac-rose. (Name in block lettering.)
12	VII.	—	Do.	Scarlet.
13	VIII.	—	Samanoud	Brown-red.
14	IX.	—	Do.	Blue.

Santah.

1	VII.	—	Santah	Scarlet.*
2	VIII.	—	Do.	Brown-red.
3	VIIIa.	—	Do.	Pale red.
4	IX.	—	Santa	Blue.

Scibin-el-Anater.

1	III.	—	Scibin-el-Anater ...	Deep brown-red.
2	IV.	B	Do.	Black on blue.
3 ^a	V.	B	Do.	Do.
b	—	D	Do.	Do.
4	VII.	—	Chibin-el-Anater ...	Scarlet.
5	VIII.	—	Do.	Brown-red.
6	VIIIa.	—	Chibin-el-Anatar ...	Pale red.
7	IX.	—	Chibine el Kanater ...	Blue.

Scibin-el-Kom.

1	IV.	A	Scibin-el-Kom	Black on bistre.
2	—	—	Do.	Black on pale green.?
3 ^a	V.	B	Do.	Black on pale brown.
b	—	C	Do.	Do.
c	—	D	Do.	Do.
4	—	D	Do.	Black on light chocolate.
5	—	E	Scibin-el-Com	Black on flesh.
6	—	E	Do.	Black on white.
7	—	E	Do.	Black on slate.?
(Nos. 5-7—name in block lettering.)				
8	VII.	—	Chibin-el-Kom	Scarlet.
9	VIII.	—	Chibin-el-Com	Brown-red.
10	VIIIa.	—	Chibin-el-Kom	Pale red.
11	IX.	—	Chibine-el-Kom	Blue.

Scio.

1	IV.	B	Scio	Bright lemon.
2	V.	E	Do.	Scarlet.

Scirbin.

1 ^a	V.	B	Scirbin	Black on pale lemon.
b	—	C	Do.	Do.
c	—	D	Do.	Do.
2	VII.	—	Cherbine	Scarlet.
3	VIII.	—	Chirbin	Brown-red.
4	VIIIa.	—	Cherbine	Pale red.
5	IX.	—	Do.	Blue.

Sedfa.

No.	Type.	Die.	Spelling of Name.	Colour.
1	VIIIa.	—	Sedfa	Pale red.
2	IX.	—	Do.	Blue.

Sembellawein.

1	VIII.	—	Sim Bellewen	Brown-red.
2	VIIIa.	—	Simbellowein	Pale red.
3	IX.	—	Sembellowein	Blue.

Sennar.

1	VIIa.	—	Sennar	Scarlet.*
---	-------	---	---------------	-----------

Serapoum.

1	IV.	A	Serapoum	Black on blue.
2	V.	A	Do.	Black on dark blue.

Sidi-Gaber.

1	VII.	—	Sidi Gaber	Scarlet.
2	VIII.	—	Sidi-Gaber	Brown-red.
3	VIIIa.	—	Do.	Pale red.

Smyrna.

1	III.	—	Smirne	Grey.
2 ^a	V.	B	Do.	Light green.
b	—	C	Do.	Do.
c	—	D	Do.	Do.
3	—	E	Do.	Black on yellow-green. (Name in bolder letters.)

Sokag.

1 ^a	V.	B	Sokag	Black on pale lemon.
b	—	C	Do.	Do.
c	—	D	Do.	Do.
2	—	E	Do.	Black on buff. (Name in larger lettering.)
3	VIII.	—	Sohag	Brown-red.
4	IX.	—	Do.	Blue.

Suakin.

1	IV.	A	Suakin	Black on deep sky blue.
2 ^a	V.	C	Do.	Black on ultramarine.
b	—	D	Do.	Do.
3	VIII.	—	Sauakin	Brown-red.
4	VIIIa.	—	Sawakin	Pale red.

Suez.

1	I.	—	Suez	Black on pale blue.*
2	II.	—	Do.	Black on old rose.
3	III.	—	Do.	Yellow-green.
4	IV.	A	Do.	Black on light blue.
5	—	B	Do.	Do.
6 ^a	V.	B	Do.	Do.
b	—	C	Do.	Do.
c	—	D	Do.	Do.
7	VII.	—	Do.	Scarlet.
8	VIII.	—	Do.	Brown-red.
9	IX.	—	Do.	Blue.

Tahta.

No.	Type.	Die.	Spelling of Name.	Colour.
1	VIIIa.	—	Tahtah	Pale red.
2	IX.	—	Tahta	Blue.

Tanta.

1	I.	—	Tauta (error)	Black on pale yellow.
2	II.	—	Tanta	Black on deep blue.*
3	III.	—	Do.	Lilac-rose.
4	IV.	A	Do.	Black on deep blue.
5	—	B	Do.	Do.
6a	V.	B	Do.	Do.
b	—	C	Do.	Do.
c	—	D	Do.	Do.
7a	—	B	Do.	Black on blue.
b	—	C	Do.	Do.
c	—	D	Do.	Do.
8	—	E	Do.	Black on indigo.
9	—	E	Do.	Black on bright blue.
(Nos. 8 and 9—name in larger lettering.)				
10	VII.	—	Tantah	Scarlet.
11	VIIIa.	—	Do.	Pale red.
12	IX.	—	Tanta	Blue.

Teh-el-Barud.

1	II.	—	Teh-el-Barud	Black on deep blue.*
2	—	—	Do.	Black on sea green.*
3	—	—	Do.	Black on slate.*
4	III.	—	Jeh-el-Barud (error)	Dull orange-red.
5	—	—	Teh-el-Barud	Orange-red.
6	—	—	Tek-el-Barud (error)	Do.*
7	IV.	A	Teh-el-Barut	Black on dark green.
8a	V.	B	Do.	Black on bright green.
b	—	C	Do.	Do.
c	—	D	Do.	Do.
9	—	E	Teh-el-Barud	Scarlet.
(Name in tall block lettering.)				
10	VII.	—	Do.	Scarlet.
11	VIII.	—	Teh-el-Baroud	Brown-red.
12	VIIIa.	—	Do.	Pale red.*
13	IX.	—	Do.	Blue.

Telah.

1	V.	E	Telah	Black on sky blue.
2	VII.	—	Talah	Scarlet.
3	VIII.	—	Tela	Brown-red.
4	VIIIa.	—	Talah	Pale red.

Tel-el-Kebir.

1	IV.	A	El Tel el Kibir	Black on deep blue.
2a	V.	B	Do.	Black on ultramarine.
b	—	C	Do.	Do.
c	—	D	Do.	Do.

No.	Type.	Die.	Spelling of Name.	Colour.
3a	V.	B	Tel el Kibir	Black on ultramarine.
b	—	D	Do.	Do.
4	VII.	—	Tel-el-Kibir	Scarlet.
5	—	—	Tel-el-Kebir	Do.
6	VIII.	—	Teh-el-Kibir (error)	Brown-red.
7	VIIIa.	—	Tel-el-Kibir	Pale red.
8	IX.	—	Do.	Blue.

Tema.

1	VIIIa.	—	Tama	Pale red.
2	IX.	—	Tema	Blue.

Tenedos.

1	IV.	B	Tenedos	Deep orange.
---	-----	---	----------------	--------------

Terieh.

1	VII.	—	Térieh	Scarlet.
2	VIII.	—	El-Tariéh	Brown-red.
3	VIIIa.	—	Terieh	Pale red.
4	IX.	—	Teria	Blue.

Took.

1	II.	—	Took	Black on red-brown.
2	III.	—	Jook (error)	Pale rose.
3	—	—	Took	Brick-red.
4	—	—	Do.	Pale red-brown.
5	IV.	B	Do.	Black on rose-lilac.
6	VII.	—	Do.	Scarlet.
7	VIIIa.	—	Tooh	Pale red.
8	IX.	—	Toukh	Blue.

Tripoli.

1	V.	A	Tripoli	Deep olive.
---	----	---	----------------	-------------

Uasta.

1	IV.	A	Uasta	Black on lilac-rose.
2	—	B	Do.	Black on pale rose.
3	VIII.	—	El-Wastah	Brown-red.

Volo.

1	IV.	B	Volo	Dark green.
---	-----	---	-------------	-------------

Wady-Halfa.

1a	V.	B	Wadi-Halfe	Grey-lilac.
b	—	D	Do.	Do.
2	VIII.	—	Wadi-Halfa	Brown-red.
3	VIIIa.	—	Do.	Pale red.

Wardan.

1	VIII.	—	Wardan	Brown-red.
---	-------	---	---------------	------------

Zagazig.

1	I.	—	Zagasik	Black on orange.*
2	II.	—	Do.	Black on greenish.
3	—	—	Zagazik	Do.*

No.	Type.	Die.	Spelling of Name.	Colour.
4	III.	—	Zagazig	Turquoise.
5	IV.	A	Do.	Black on yellow-green.
6	—	B	Do.	Do.
7	V.	A	Do.	Do.
8a	—	C	Do.	Do.
b	—	D	Do.	Do.
9	—	—	Do.	Black on deep rose.?
10	—	E	Do.	Black on yellow-green.
11	—	E	Do.	Scarlet.
(Nos. 10 and 11—name in bolder and clearer lettering.)				
12	VII.	—	Do.	Scarlet.
13	VIII.	—	Do.	Brown-red.
14	VIIIa.	—	Zagazik	Pale red.
15	IX.	—	Zagazig	Blue.

Zefté.

1	I.	—	Zifta	Black on light blue.*
2	II.	—	Do.	Black on pale grey.
3	—	—	Zefta	Do.*
4	—	—	Do.	Black on magenta.?
5	III.	—	Do.	Olive.
6	—	—	Do.	Grey-green.
7	IV.	A	Zefte	Black on grey-green.
8a	V.	B	Do.	Black on bluish-green.
b	—	C	Do.	Do.
c	—	D	Do.	Do.
9	—	E	Do.	Black on dark green.
10	—	E	Do.	Black on yellow-green.
(Nos. 9 and 10—name in larger lettering.)				
11	—	E	Zifte	Scarlet.
(Name in very wide Roman lettering.)				
12	VII.	—	Do.	Scarlet.
13	VIII.	—	Zefté	Brown-red.
14	VIIIa.	—	Zifta	Pale red.
15	IX.	—	Zefta	Blue.

Zeila.

1	V.	E	Zeila	Black on light yellow.
2	VIIIa.	—	Zeyla	Pale red.

General Issues for all Offices.

1	X.	—	(Unnamed)	Blue.
2	—	—	Do.	Ultramarine.
3	XI.	—	Do.	Light blue.
4	—	—	Do.	Deep blue.

Telegraph Stamps.

1	XII.	—	(Unnamed)	Black on rose.
2	—	—	Do.	Black on blue.